



# Link Analyst®

High-Level Monitoring for Your Entire Network

## Keeping Watch Over Your Network

Link Analyst is a robust network monitoring solution that provides powerful reports, inventory capabilities, configurable alarms, hierarchical discovery, and device and route mapping. Arrange devices by Business Group to instantly see which area of your organization needs attention. From small and mid-sized businesses to large corporations, Link Analyst provides insight into **the devices on your network and the routes that connect them.**

Transform network data into strategic business information for use in analysis, trending, resource planning, and more.

- **Actively discover** devices across the network
- Produce **dynamic reports** with ease
- Manage network performance and monitor resources
- **Detect** network abnormalities and failures
- Configure alarms for **instant notification**
- View data from any **workstation**
- **Integrate** with other solutions, including the Observer® family of network analyzers

This powerful, intuitive solution provides the functionality you need to work proactively to ensure your network and your business remain up and running.

Stay alert, stay informed, and *make better network decisions.*



Dynamic Reporting



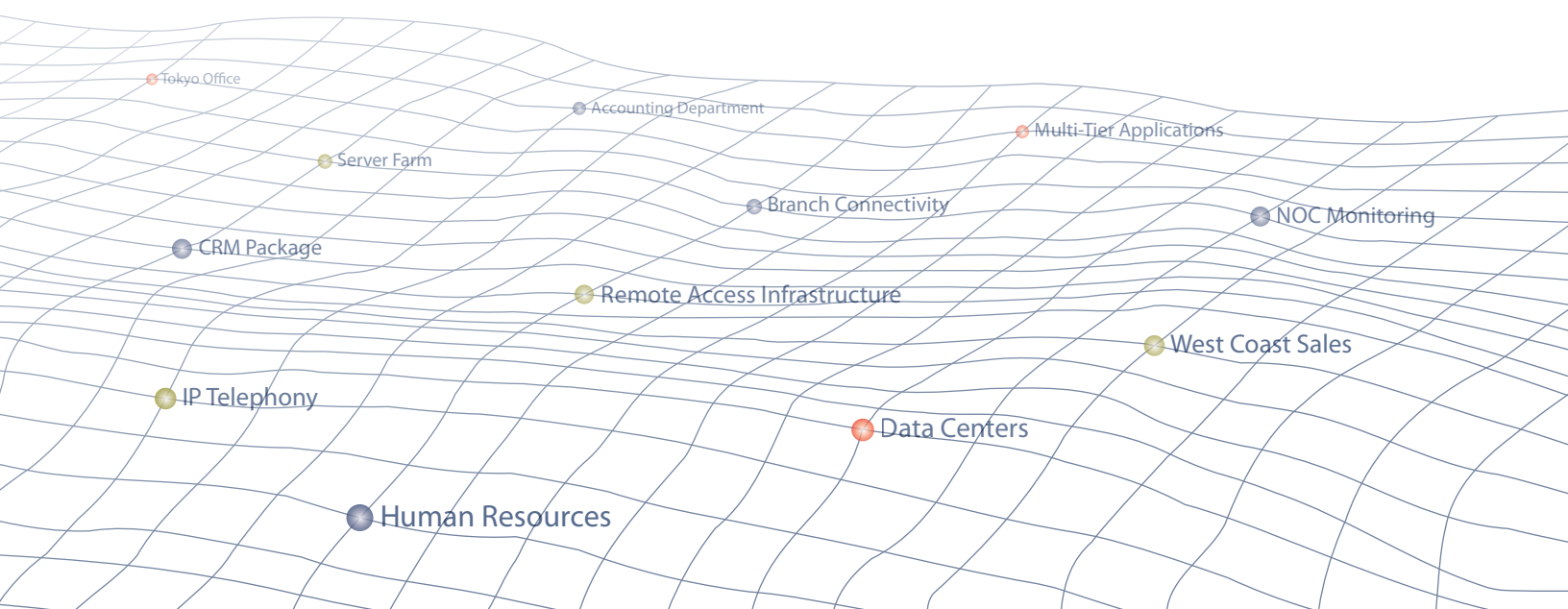
Device & Route Monitoring



Event Notification



Active Discovery



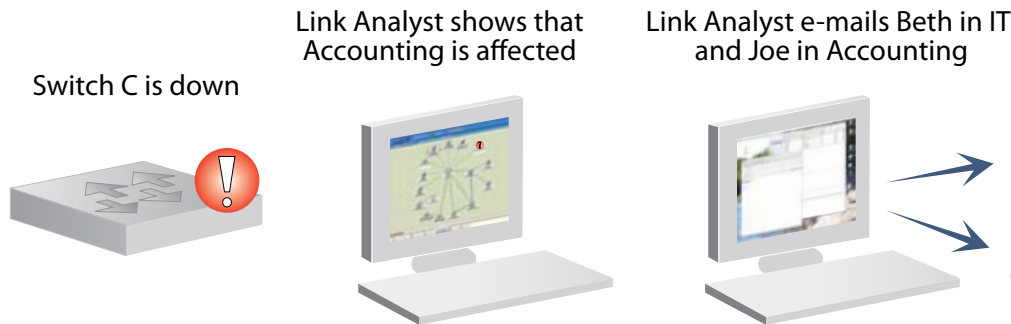
## Create and Monitor Business Groups

Link Analyst's automated active discovery and polling features allow network engineers to monitor and report on routes and configurable device clusters called **Business Groups**. Combined with Alarms, they allow you to instantly see which area of your business needs attention.

- Create Business Groups by department, function, device type, location, or customize to suit your needs
- View reports, monitor resources, track inventory by Business Group
- Double-click within Business Groups for easy sub-level analysis



Logically group devices according to your needs



Link Analyst shows that Accounting is affected

Link Analyst e-mails Beth in IT and Joe in Accounting

Switch C is down



## Dynamic Reporting

Customize, view, expand, and compare reports for in-depth analysis on routes, devices, and groups. Track statistics over time for use in network trending and resource planning.

### Report types include:

- Alarms
- Business Group Status
- Device Events
- Response Time
- Alarm Log
- Inventory and Discovery Reports

### View Data Remotely with Web Reporting

Link Analyst provides easy-to-read reports from anywhere on the network.

- **Arrange Views**  
Sort charts by alert status, name, or number of good, marginal, or poor polls with a single click
- **Access Reports**  
Review and compare information from one or more selected time periods
- **Password Protection**  
Protect data from unauthorized parties by limiting user access

Device	Type	Polling Time	Response Time (ms)	Status
10.10.10.100	Station	5/02/2007 1:14:53	6.029	●
10.10.10.101	Web Server	5/02/2007 1:14:53	6.328	●
10.10.10.102	Server	5/02/2007 1:14:53	6.170	●
10.10.10.103	Station	5/02/2007 1:14:53	6.469	●
10.10.10.104	Server	5/02/2007 1:14:53	12.091	●
10.10.10.105	Web Server	5/02/2007 1:14:53	6.183	●
10.10.10.106	Web Server	5/02/2007 1:14:53	6.114	●
10.10.10.107	Station	5/02/2007 1:14:53	6.145	●
10.10.10.108	Web Server	5/02/2007 1:14:53	6.440	●
10.10.10.109	Web Server	5/02/2007 1:14:53	6.711	●

A Response Time Report for Human Resources

### Run Inventories for Asset Management

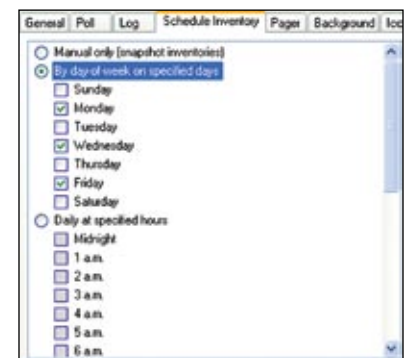
Keep track of and monitor changes in items such as removable hard drives or installed software within devices.

- Run automatic inventories or take snapshots
- Create alarms for specific WMI and SNMP objects
- Schedule inventories and run reports

### Historical Data Analysis

Solve small problems before they become big ones by tracking historical response statistics, including degradation.

- **Review** routes and response times for any recorded event or timeframe
- **Log** all statistics for historical interpretation and baselining (choose days, months or years)
- **Record** device performance
- **Identify** whether a problem is intermittent or ongoing



Scheduled Inventories



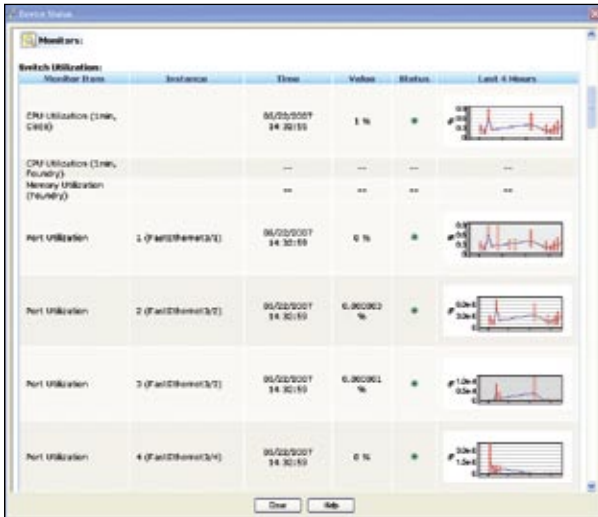
## Device & Route Monitoring

Know which devices, routes, and IP services are up or down and how they're performing. Intuitive graphical or table-based displays make it easy to access the information you need.

### SNMP & WMI Monitoring

Harness the power of Simple Network Management Protocol (SNMP) and Windows Management Instrumentation (WMI), and configure custom reports and alarms on any statistic the device can provide. Data is stored for long-term trending and analysis.

- Gather information on: Active Directory Servers, Host Resources, Internet Information Servers, Printers, Router Utilization, SQL Servers and Switch Utilization, or create your own monitor
- Monitor virtual servers and workstations
- Set user-configurable alarms and thresholds
- Graph statistics over time



Right click a device for statistics and reports

### Obtain Point-to-Point Route Analysis

Link Analyst also offers complete Route Mapping.

- Obtain graphical and table-based displays of a route between Link Analyst and any device reachable via IP, including response time between hops
- Monitor the performance of the connection between two devices
- Track uptime and response time for QoS and SLA verification



## Event Notification

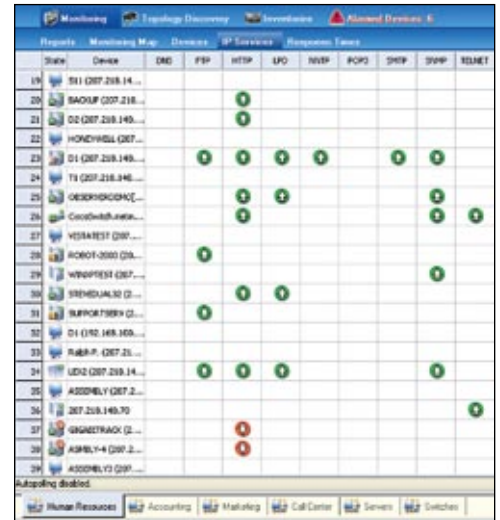
Be alerted when a device is unreachable or has poor response time. Alarm on SNMP or WMI objects, such as when CPU or memory usage exceeds a certain threshold.

Link Analyst's alarms are highly customizable. Set alarms and adjust thresholds to alert you instantly to problems or changes in critical devices and routes.

- View alarms by Business Group/Route
- Drill down for device status details
- Graph and compare alarm data over time



Highly configurable alarm parameters

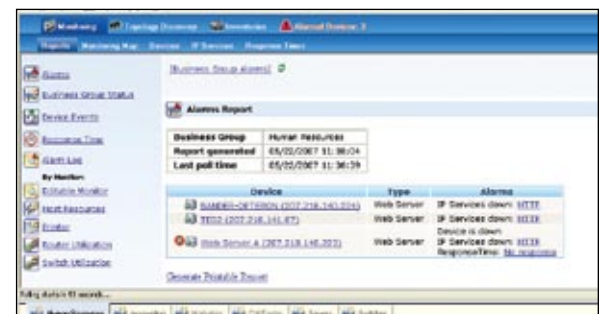


Intuitive interface displays service availability

### Verify Quality of Service (QoS) and Service Level Agreements (SLAs)

With Link Analyst you can monitor the severity of network degradation and spot trends that may indicate an impending failure.

- Audit network performance to ensure existing SLAs are in compliance
- Configure service level tracking for any device
- Quickly identify lapses in 3rd party agreements



View alarms by group and drill down for details



## Active Discovery

### Create Device and Route Maps in Minutes

Link Analyst's active discovery ability helps you generate a map of any segment or group of systems on your network. Review current network assets with a visual grade of current response times. Drill-down functionality is available for individual station statistics. Tabs for group-specific details show device addresses, response time histories and configuration status.

### Map Local and Remote Networks of Any Size

- See not only *what* devices are connected to the network, but *how* they are connected
- Obtain both a graphical and table-based display of a network, network segment, or remote locations on the WAN
- Monitor response time and performance of devices anywhere on the network within minutes



Discover, view, and arrange devices graphically

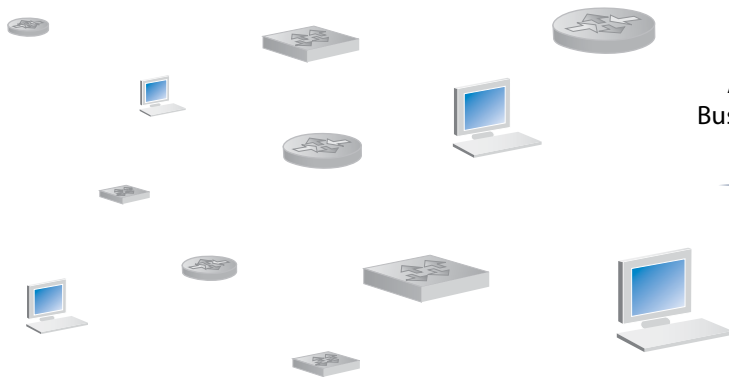
## Link Analyst Integrates with Observer® for Complete Network Analysis

Link Analyst fully integrates with the award-winning Observer analysis console. Install Observer and Link Analyst for comprehensive network monitoring and fault analysis. First, select any network device, probe or SNMP agent inside Link Analyst. Second, right-click on that device to run deeper analysis with Observer. With Link Analyst and Observer you can:

- Start Packet Captures on selected devices or device pairs
- Create filters on selected devices or device pairs
- Review Real-Time Statistics on any selected probe or SNMP agent
- Export Link Analyst alias lists to Observer
- Import Observer alias tables into Link Analyst maps

By associating a probe with a specific map, Link Analyst can take full advantage of Observer's Distributed Network Analysis (NI-DNA™) architecture allowing instant monitoring of local or remote segments.

### Your network before Link Analyst



Active discovery +  
Business Group creation



### Your Link Analyst monitored network



### About Network Instruments

Network Instruments provides in-depth network intelligence and continuous network availability through innovative analysis solutions. Enterprise network professionals depend on Network Instruments' Observer product line for unparalleled network visibility to efficiently solve network problems and manage deployments. By combining a powerful management console with high-performance analysis appliances, Observer simplifies problem resolution and optimizes network and application performance. The company continues to lead the industry in ROI with its advanced Distributed Network Analysis (NI-DNA™) architecture, which successfully integrates comprehensive analysis functionality across heterogeneous networks through a single monitoring interface. Network Instruments is headquartered in Minneapolis with sales offices worldwide and distributors in over 50 countries. For more information about the company, products, technology, NI-DNA, becoming a partner, and NI University please visit [www.networkinstruments.com](http://www.networkinstruments.com).

### Solution Bundles

Contact a Network Instruments representative or dealer to ask about product bundles that cover all of your network management needs.



### Corporate Headquarters

Network Instruments, LLC • 10701 Red Circle Drive • Minnetonka, MN 55343 • USA  
toll free (800) 526-7919 • telephone (952) 358-3800 • fax (952) 358-3801

[www.networkinstruments.com](http://www.networkinstruments.com)

### European Headquarters

Network Instruments • 7 Old Yard • Rectory Lane • Brasted, Westerham • Kent TN16 1JP • United Kingdom  
telephone + 44 (0) 1959 569880 • fax + 44 (0) 1959 569881

[www.networkinstruments.co.uk](http://www.networkinstruments.co.uk)