

INE Compact – Small, Silent Desktop Emulator

Creating the right networks conditions

With more and more applications being expected to work over Wide Area Networks (WANs), Wireless LANs, GPRS/3G and Satellite networks it makes sense to include application function and performance testing in these environments as part of your application development and testing process.

How can INE Compact help me?

iTrinegy Network Emulator - Compact (INE Compact) is aimed at IT Specialists, Professional Developers or Professional Testers looking for a cost effective, simple to use, in-line (2 port) network emulator for testing how their application(s) perform in a wide range of Wide Area or Wireless network environments.

INE Compact is a small form factor (book-size) embedded Windows appliance which can be used to replicate the network conditions applications are likely to encounter when running over WAN/Wireless Networks from Windows, Unix or Linux based systems or online games consoles. It can work through switches or routers too - in fact any Ethernet based environment. As a result, the applications under test "experience" realistic network conditions when accessing the network, rather than the near perfect LAN they're connected to.

Using INE Compact may be the first step, before a full multi-user test for which the INE Enterprise version is recommended.



How Does It Work?

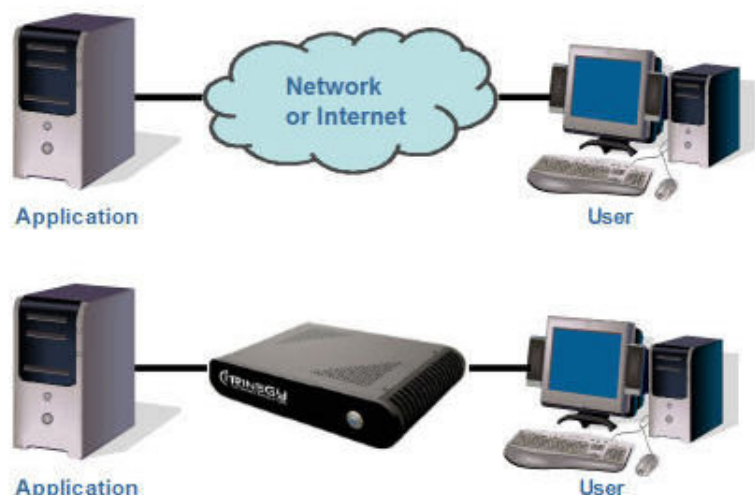
INE Compact is a small appliance that sits in the network path between the host machine and the end-user client. When activated, it intercepts network communications between the hosted application and the end-user device and applies the desired network conditions.

By way of an example, it allows your LAN network, which might be 100 Mbit/s with less than 1ms Delay (Latency) and almost 0% Loss, to behave like a WAN (Wireless, Satellite, or other non-LAN network) with very different parameters. So now when you run your application it's just like running it in that network.

What Network Characteristics can be controlled?

INE Compact allows you to control all the major network parameters that affect application behaviour in networks:

- ◆ **Link Speed:** e.g. T1, E1, Modem, (A)DSL, GPRS, 3G, Satellite etc.
- ◆ **Available Bandwidth:** How much of the link the application can use.
- ◆ **Delay (Latency):** How long the network packets take to reach their destination e.g. inter city, nationally, internationally or over wireless networks like GPRS, 3G or WiMAX.
- ◆ **Jitter:** How much variation there is in the delay, which can have a profound effect on applications like VoIP, and live Video over IP etc.



INE Compact replicates the internet or Wide Area Network at your desktop

INE Compact - WAN Simulation At The Desktop

- ◆ **Loss:** How much data is lost by the network, for example in wireless networks and some types of WAN data, losses may be as high as 10% or even more.

Symmetry & Asymmetry

All of the above parameters are controllable asymmetrically as well as symmetrically i.e. you can have separate uplink and downlink values for data going across the simulated network.

How Easy is INE Compact to Use?

INE Compact has been designed with speed and ease of use in mind.

From the main control interface it is a simple process to make changes to Bandwidth, Delay (Latency) and Packet Loss. Simply set the appropriate slider to the required setting, click update and you are ready to see how your application will perform in the new network environment.

Can I Save My Network Settings?

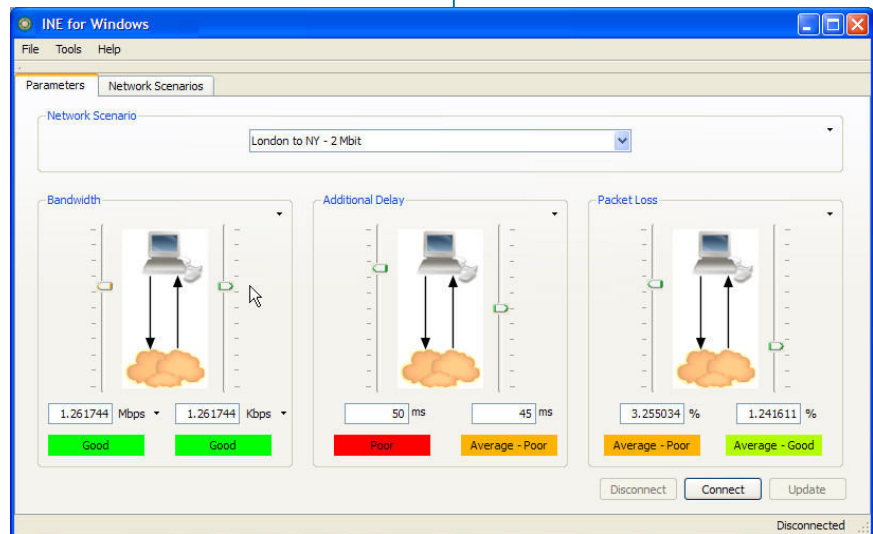
Yes, INE Compact can store your current settings as a Network Scenario File for subsequent reuse.

But what if I don't know which settings to use in the first place?

If you are not sure which network settings to apply you can download predefined network scenarios from the iTrinegy networks scenario repository.

Alternatively, a network specialist within your organisation could create and save suitable scenarios as Network Scenario files

Another option is to use a product like the INE Companion which can record (and replay) traffic going across your network and then create a network scenario based on this data.



The INE Compact Control Interface comes with easy-to-use slider controls and drop-down menus for selection of pre-saved network test scenarios

Can INE Compact be remote controlled?

Yes it is possible to remotely control INE Compact using INE Console, VNC, another INE Compact or INE for Windows (Professional).

Can INE Compact be used to create more than simple 2 point networks?

Yes, multiple INE Compact units can be deployed to create multi-segmented networks, each with different network characteristics, so that sophisticated network environments can be built up.

All INE Compact appliances can then be centrally managed together via the INE Console.

Associated INE Products

INE Companion

iTrinegy Network Emulator Companion (INE Companion) is a powerful product for monitoring and reporting on applications data flowing across live network segments, with the capability to generate INE Network Scenarios for use by INE Compact or other INE Emulator products.

INE Console

The INE Console allows many INE for Windows and/or INE Compact network emulators to be controlled simultaneously from one GUI making

the management of large scale testing of networked applications as simple as possible.

Other iTrinegy Network Emulators

iTrinegy also offers :

INE Enterprise – A multi-site, multi-path network emulator

INE Ultra – A network emulator that replicates high speed, high volume networks for large scale testing.

INE LCD –A fully self-contained, portable emulator ideally for use in the field.

INE for Windows –Network emulation software designed to install onto a Windows XP/Vista or Windows Server system.



iTrinegy Limited

Bulse Grange,
Norton End, Wendens Ambo,
Saffron Walden, CB11 4JT

tel (UK): +44 (0)845 226 1900
fax (UK): +44 (0)845 226 0607

info@iTrinegy.com

iTrinegy Inc.

255 West Moana Lane
Suite 110
Reno, NV 89509
USA

tel / fax (USA): +1 (888) 448 4366

www.iTrinegy.com