

GL's Packet series products support SIGTRAN

Decodes protocols SCTP, M2UA, M3UA, M2PA, SUA, TUA, IUA, ISUA

Complete SS7 message decoding

Permits testing and verification of Signaling Gateways

Summary, Detailed and Hex Dump Views available

Filter and Search Capabilities

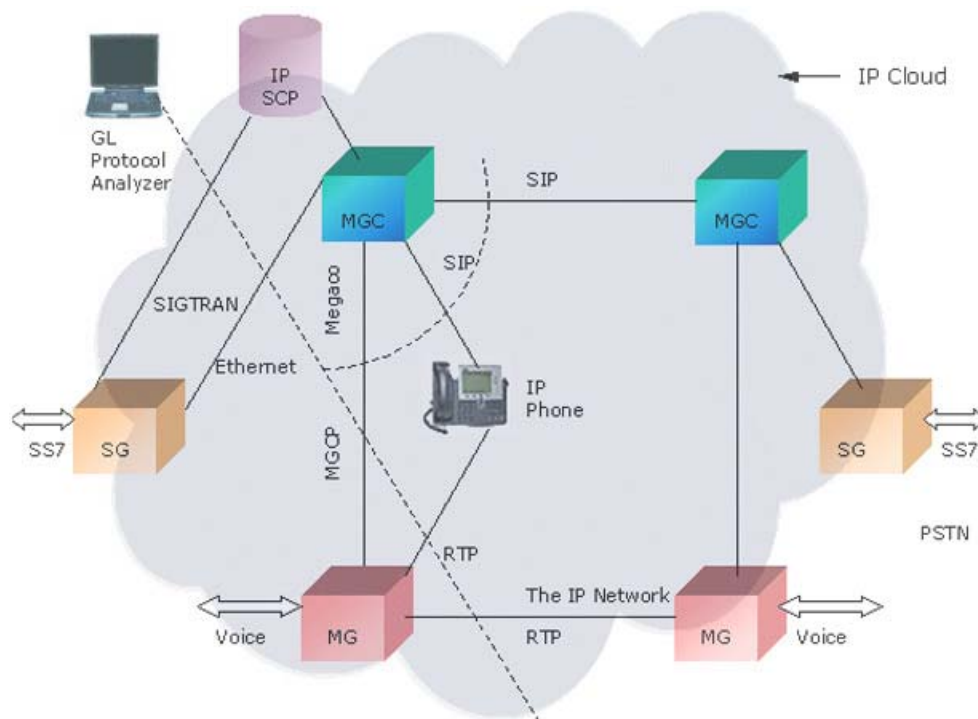
Supports Real-time as well as Off-line analysis

Statistics View displays call and MSU statistics

Call trace isolates call status, call duration, OPC, DPC, CIC of each call

Compatible with Windows 2000/XP

SIGTRAN Analyzer



Overview of SIGTRAN

SIGTRAN protocol decoder software is a VoIP testing tool that permits real-time analysis, call trace, capture, and filter of SS7 and ISDN signaling messages over IP protocol. SIGTRAN uses a new connection oriented transport protocol called Stream Control Transport Protocol (SCTP - RFC 2960). SCTP is at the same level but more efficient at transport than TCP, UDP, or RTP. Analyzer supports SCTP, M2UA, M3UA, M2PA, SUA, TUA, IUA, ISUA SIGTRAN protocols.

- Works simultaneously with GL Communications' Packet Series products.
- Uses industry standard NIC Card for interfacing to Ethernet.
- GL Communications' SS7 and SIGTRAN Analyzer simultaneously can permit testing and verification of Signaling Gateways.
- Summary View displays MTP2, MTP3 information and SS7 Message types, Called and Calling number, SCCP message type, SSN, INAP information.
- Detailed View displays easy to understand decodes of the user-selected frame.
- Hex Dump View displays the frame information in HEX and ASCII format.
- Statistics View displays call and MSU statistics at any link or entire link set.
- Call Trace View isolates call specific information such as status of each call (active/completed), duration of completed call, OPC, DPC, CIC, Called and Calling Party Numbers, and more.
- Records data up to the capacity of hard disk or provides a circular buffer for recording purposes.
- Includes powerful 'Filter' and 'Search' capabilities.
- Exports detailed information to ASCII file and summary information to a text file.
- Supports Real-time as well as Off-line analysis.
- Provides the 'Capture Filter' option to filter M2UA, M2PA, M3UA and SUA frames on the specified ports.
- Application can be installed on multiple computers supporting Windows 2000/XP.

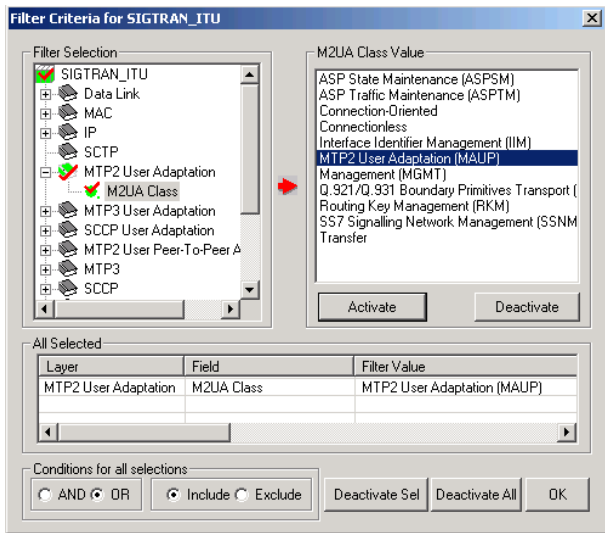


GL Communications Inc.

207A Perry Parkway, Suite One., Gaithersburg, MD 20877 • (V) 301-670-4784 (F) 301-670-9187
Web Page Address: <http://www.gl.com/> • E-Mail Address: info@gl.com

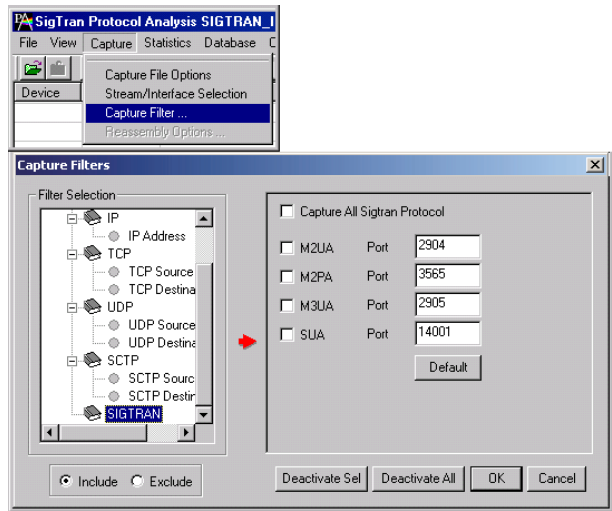
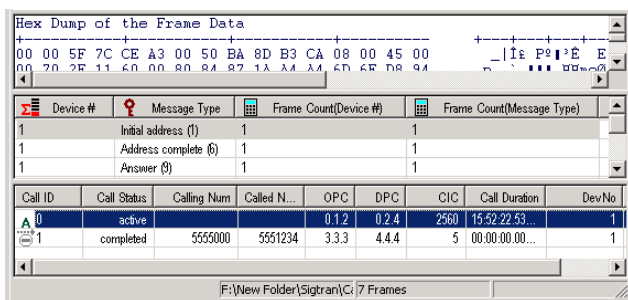
Real-time and Offline Analysis

SIGTRAN application provides the option to analyze SIGTRAN messages in real-time and off-line. With real-time analysis, it can record the entire traffic or the filtered traffic into a trace file up to the capacity of the hard disk or provides a circular buffer technique. The recorded trace file can be analyzed offline, exported to ASCII file or printed. The Real time filtering can be done with the help of capture filter option for M2UA, M2PA, M3UA and SUA frames.



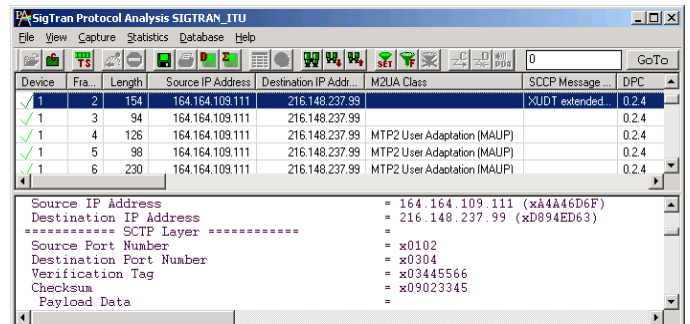
User Interface

The SIGTRAN Analyzer application is invoked from the main menu of GL Communications' PacketScan™ Analyzer. The analyzer displays summary, detailed, hex dump, statistics and call trace view in different panes. The summary pane displays Direction, Frame Number, Time, Length, BSN, BIB, FSN, DPC, OPC, CIC, SSN, Called number, Calling number and various types of SIGTRAN messages for all the frames.



Filtering and Search Capability

SIGTRAN Analyzer includes powerful features such as filtering and search capabilities. It allows to isolate required frames from all frames in real-time as well as off-line analysis. The application allows filtering according to BSN, BIB, FSN, FIB, Status Field, OPC, DPC, SSN, CIC, Called and Calling party number. In addition, the application provides various search criteria to search appropriate frame.



The Hex dump view displays the frame information in HEX and ASCII. Statistics view displays information such as byte count, frame count etc. Call trace window displays status of each call (i.e. active/ completed), duration of completed call, OPC, DPC, CIC, Called and Calling Party Numbers, and more.

Buyer's Guide

PKV105 [SIGTRAN Analyzer Software](#)

Related Software

- PKV100 [PacketScan Software](#)
- XX120 [SS7 Analyzer Software \(T1 or E1\)](#)
- XX100 [ISDN Analysis Software \(T1 or E1\)](#)
- XX130 [Real-Time Frame Relay Protocol Analyzer \(T1/E1\)](#)
- XX150 [GSM & TRAU Analyzers \(T1/E1\)](#)
- XX090 [HDLC Capture and Playback Software \(T1/E1\)](#)

Related Hardware

- PCT001/PCE001 [Single T1/E1 PCI Card](#)
- DPT001/DPE001 [Dual T1/E1 PCI Card](#)
- DLT001/DLE001 [Dual T1/E1 Laptop Analyzer](#)