

Ameritec

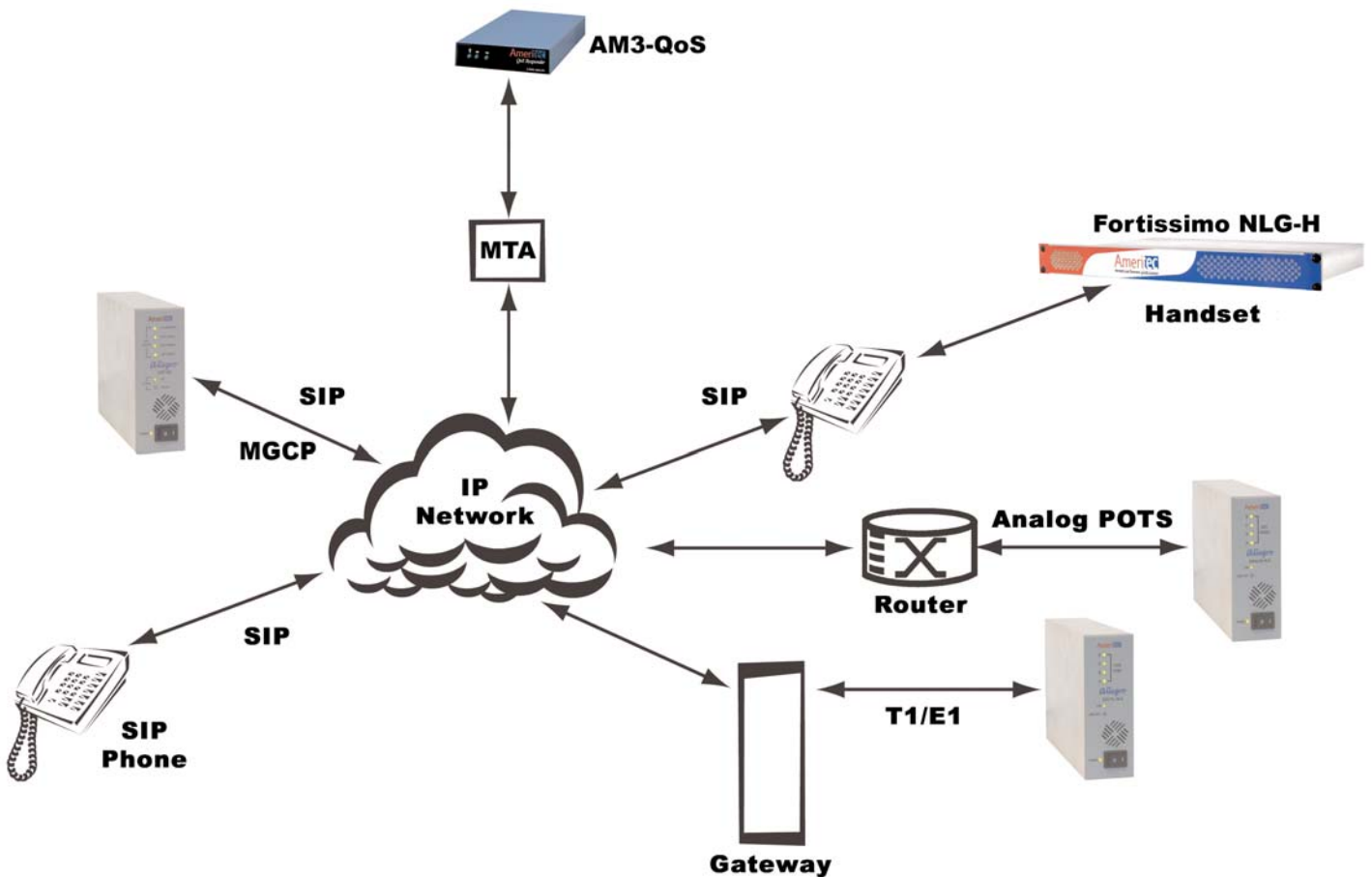
Allegro Family of Products



- ▶ Allegro is the world's smallest, full-featured network load generation product designed to test and qualify the voice and packet network.
- ▶ Allegro speeds up your system integration, functional and performance testing at an unbeatable price/performance ratio.
- ▶ Allegro is designed to place calls to or receive calls from other Allegro, Fortissimo or AM3-QoS units to provide a complete test system of call generation and Quality of Service (QoS) measurements

The Allegro family of network load generators represents a significant technological advancement in desktop call generation. Designed to meet the requirements of today's developer of both legacy and new generation switches including hardware and software modules. Operators focusing on system integration or revenue and quality assurance will also enjoy the functionality, ergonomics and costs of this solution. The Allegro packs the power of 8 simultaneous SIP/MGCP calls, up to 4 × T1/E1 spans or 4 × analog POTS (loop/ground) circuits in a unit that sits inconspicuously on a desktop.

The Allegro comes in three versions - an Ethernet VoIP configuration, a multi-span T1/E1 configuration, or a 4-line analog configuration. The Allegro IP Voice Quality Tester (VQT) is capable of generating signaling and media traffic on 8 unique IP sessions. The QoS measurement package is standard on this unit. The digital version ships complete with 2 T1/E1 software selectable spans, a full quality of service (QoS) measurement package and CAS, PRI and SS7 signaling capabilities. Optionally, the unit may be configured for 3 or 4 digital spans. The analog version supports 4 analog circuits, complete with loop and ground start signaling and Ameritech's industry leading QoS measurement package.





Operation

The Allegro products allow the developer to simulate various types of network traffic on a select number of spans or lines without having to go to the expense of purchasing large-scale units. Maintaining full testing flexibility on a smaller line count is the premise behind Allegro. Each Allegro is controlled via a PC workstation over a 10/100 MB Ethernet port and utilizes a Conductor graphical user interface (GUI) that is intuitive and easy to use. Alternately, a command set option allows the user to remotely control units via a Telnet session for test automation applications. Full scripting of call scenarios is accommodated and manipulation of signaling protocols is provided to allow the user to fully test and debug equipment under test before releasing product to the next stage of development. Audio output is provided on each Allegro to complete the testing phase so that a developer can further verify the integrity of any call scenario.

Measurements

Long known for providing the most comprehensive set of measurements in the call generation industry, Ameritec has incorporated into every Allegro product the ability to simultaneously measure traditional call statistics such as calls originated and completed as well as a comprehensive set of QoS measurements designed to provide packet quality and voice quality scoring. This complete set of measurements provides the developer with PSTN to packet network correlation scores. The ability to utilize our GoldenVoice technology to measure packet loss, jitter, signal to noise ratio, clipping and delay while simultaneously providing R-factor, GMOS, GPSQM, and GPESQ scoring on all lines makes this product an invaluable development tool.

Enhanced Features

A modem QoS feature verifies accurate detection and transport of FAX, Modem and TTY/TDD signals in pass-through scenarios. The Echo Cancellation Test and Voice Echo Response test are features that can be used to detect and characterize Echo and verify operation of Echo cancellers. Synchronized call scripts provide the ability to test complex call scenarios such as A->B, A->B; B->A, conference calling, call waiting etc. GPS synchronization is available on ALG-A units to provide end-to-end testing from sites that are not co-located.

Configuration

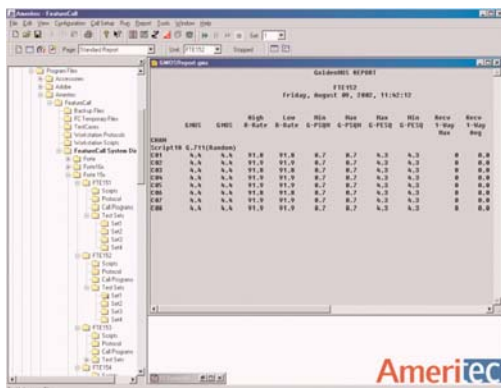
Upon power up, each Allegro prompts the user to recall previously stored test configurations from the PC. This includes the type of call programs that the user desires to run as well as G.711, G.729, T1, or E1 span selection, the type of signaling required (CAS, PRI, SS7 for digital units and loop or ground start for analog units), and any parameter settings that are required for a specific test. At the completion of any test, the user is prompted to store the unit's configuration so that it may later be retrieved to verify test integrity or re-run a previous test. Virtually, an unlimited number of these configurations can be stored on the workstation for easy recall.

Performance

While this may be the industry's smallest network load generator, once it provides the highest performance. Utilizing independent resources, each Allegro can generate as many calls as your equipment can support. The Allegro can configure nearly every parameter associated with the generation or answering of a call and therefore it is possible to test for load related issues as well as fundamental integrity issues. Additionally, multiple Allegro units can be used side by side to increase call volumes without significantly increasing your investment.

Applications

- ▶ Load Generation
- ▶ Cable Telephony
- ▶ Automated Testing
- ▶ FAX/Modem Recognition
- ▶ Quality of Service Testing
- ▶ Calling Feature Testing
- ▶ Network Testing



Conductor

Wizard Required Script Setup

Set up the script parameters for the first script. All empty parameter boxes [except for extended digit strings] must be filled in for the test to run correctly. Each parameter is applied to all selected lines.

The Incr. box beside each parameter allows you to add an increment value to each occurrence of the parameter as it is assigned. You can choose any reasonable value as an increment, keeping in mind the parameters are 16 bit integers.

Not all parameters require you to specify an increment, and a blank value is the same as zero.

Script: C:\Program Files\Ametec\Conductor\Analog Orig ID Tone 9300001.qsc

Parameter #1	Parameter #2	Parameter #3	Parameter	Incr.	Parameter	Incr.
DialType	2		DigitOff-Time	60		
DigitString	9150001	1	DigitOn-Time	60		
AnsSpvTimeout	10.0		DlyB4SendID	0.4		
ChkAnswerSupv	0		DTFailThld	15.0		
DialDelay	0.0		DTSlowThld	3.0		

< Back Next > Cancel Help

Test Scheduler

Sched 1 | Sched 2 | Sched 3 | Sched 4

Start Time: 3:36:28 PM Run for: 00:01

Start Date: 12/16/2005

Report: Include Directory: C:\Program Files\Ametec\Conductor\Temporary Files

Unit: Configuration

Analog: ALG-A ID. ala

Program Files\Ametec\Conductor\Configuration Files\ALG-A ID. ala

Clear Sched Start test Save Close Help

Wizard Configuration Save

All necessary data has been entered. If you wish to enter a description of the configuration, enter it into the Configuration Description box below.

To continue, press Finish. Check the appropriate checkbox to send the configuration to the unit and initiate a test run. To exit without saving the changes, press Cancel.

Configuration Description:

Configuration File Name: C:\Program Files\Ametec\Conductor\Configuration Files\ALG-A ID. ala

Load Configuration to unit when Save complete

Run Test when Load Complete

< Back Finish Cancel Help

Line Editor

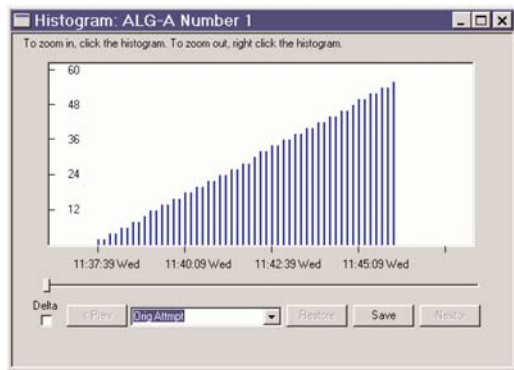
Configuration File: C:\Program Files\Ametec\Conductor\Configuration Files\ALG-A ID. ala

Script: C:\Program Files\Ametec\Conductor\Analog Orig ID Tone 9300001.qsc

Call Programs and Parameters

Line	DialType	DigitString	AnsSpvTimeout	ChkAnswerSupv	DialDelay	DigitOff-Time	Digit
1	2	9150001	10.0	0	0.0	60	
2	2	9150002	10.0	0	0.0	60	
3	2	9150003	10.0	0	0.0	60	
4	2	9150004	10.0	0	0.0	60	

OK Cancel Help



Statistics

Line Detail Report

Units: Analog

Friday, December 16, 2005, 15:42:26

Start: Friday, December 16, 2005, 15:39:13. Duration: 0 00:03:07

Scripts: Analog Orig ID Tone 9300001.qsc, Analog Term ID Tone 9300002.qsc

	Orig Attempt	Orig Compl	Term Attempt	Term Compl	Receive ID Test Failed	Receive ID Not Processed	Send ID Test Fail
Analog Line							
1	15	15	0	0	0	0	0
2	0	0	15	15	0	0	0
3	15	15	0	0	0	0	0
4	0	0	15	15	0	0	0
TOTL	30	30	30	30	0	0	0

Configuration Summary

Unit Setup | Signaling | Scripts

Script 1 | Script 2 | Script 3 | Script 4 | Script 5 | Script 6 | Script 7 | Script 8 | Script 9 | Script 10

Script: B:\Ametec\Conductor\Analog Orig ID Tone 9300001.qsc

Lines: Even Report Format Advanced

Unit supports 4 lines

Parameter #1	Parameter #2	Parameter #3	Parameter	Incr	Parameter	Incr
DialType	2		DigitOff-Time	60		
DigitString	9150001	1	DigitOn-Time	60		
AnsSpvTimeout	10.0		DlyB4SendID	0.4		
ChkAnswerSupv	0		DTFailThld	15.0		
DialDelay	0.0		DTSlowThld	3.0		

Save Save As Close Help

Analog - Line Control

Enable Disable (X)

Start

Finish

Stop

1 2 3 4

Close Help Clear Stats

General characteristics

User interface	Windows 2000, XP based GUI
Ethernet port	- One RJ45 connector and two LED indicators per network interface - 10/100 BaseT interface - Complies with IEEE 802.3
Dimensions (w × h × d)	51 × 127 × 178 mm 2" × 5" × 7"
Power	90 to 264 VAC, 47 to 65 Hz
Weight	900 g/2 pounds

Audio monitor

Audio port	Provides audio output for direct connection into PC speakers
Sync. ports	Synchronize multiple Allegro units or connect to AMMSG unit of remote testing for QoS measurements

Call programs and scripts

Features	- Commonly used scripts supplied with unit - Scripts created and downloaded from workstation or PC
----------	---

System

Capacity	8 unique IP sessions, 4 analog lines, or 2 digital spans (optional 4 spans)
Call volume	Typically 500 confirmed calls per hour per channel/line (DTMF dialing, tone ID confirmation, 2 unpaired lines)
Line types	- SIP/MGCP calls - Loop start/ground start, 2 wire - T1/E1 spans (CAS, PRI, SS7) - Pulse, DTMF, MFR1 & MFR2 dialing
System start modes	- Synchronous - Random
Test interface	1 RJ45 (VoIP VQT), 4 RJ45 (digital) - 4 RJ11 (analog)
Front panel ALG-D and ALG-A	- 4 LEDs, one per line or PCM span (digital) - Line status display: Green: line off-hook (analog) PCM sync (digital) - Unit active display: Dark: unit off Green: power on
Front panel ALG-VoIP VQT	4 LEDs - GUI connected - Test loaded - Test running - Test error

Voice channel functions

Detectors	Tone detectors are based on digital signal processors (DSPs) 1 per channel
Call progress detectors	- One detector per line or B-channel - Detects: dial tone, busy, recorder, ring, ring back, supervision, wink
Path confirmation receiver	- One receiver per line or B-channel - Frequency range: 10 to 2500 Hz - Accuracy: 1%, ± 10 Hz - Sensitivity: 0 dBm to -24 dBm
Signal tone decoders	One receiver per channel
Digit receiver	- Decodes received DTMF, MFR1, MFR2 digits - Dynamic range: 35 dB
Single frequency tone generator	64 selectable tones

Voice path confirmation

Channel path verification voice circuit switched	10 user selectable single tone signals to send unique channel ID tones Encoding scheme 0: 1025 Hz 1: 1150 Hz 2: 1275 Hz 3: 1400 Hz 4: 1525 Hz 5: 1650 Hz 6: 1775 Hz 7: 1900 Hz 8: 2025 Hz 9: 2150 Hz 64 user selectable single tone signals
Circuit switched data	- 511 and 2047 BERT pattern test for 56 kb/s or 64 kb/s channels - 511 bits pattern conforms to ITU-T O.153 - 2047 bits pattern conforms to ITU-T O.152
Packet switched data (PRI only)	Up to 5 user selectable X.25 packets for confirmation

Voice over Packet

Voice path confirmation	GoldenVoice™ signal designed to pass through vocoder
Packet drop out count	Count lost packets for frame sizes of 5, 10, 15, 20, 30, 40 and 100 ms
Measure delays through systems	- Round trip delay ± 10 ms resolution - One way delay ± 5 ms resolution
Measure clipping of voice (leading & trailing edge)	Peak and average clipping of standard reference with ± 5 ms accuracy

Jitter	Peak and average jitter of standard reference with ± 5 ms accuracy
Signal-to-noise ratio	Average and maximum SNR received (from 0 to 39 dB)
Signal energy	Average and maximum GoldenVoice energy received (from 0 to -50 dBm)
Spurious energy	Maximum non-GoldenVoice energy received (from 0 to -50 dBm)
Total energy	Average and maximum GoldenVoice energy plus extraneous noise received (from 0 to -50 dBm)
GoldenVoiceTM	- Noise received (from 0 to -50 dBm) - Ten programmed Golden Voice tone signals, used to send the ID from each side encoded as three tone sequences
QoS	Calculation of R-factor GMOS, GPSQM, GPESQ, R-factor is based upon E-model in ITU-T G.107

Digit generators

Dialed digit strings are of unlimited length

Dial pulse generator

- Programmable dial speed: 1 pps to 999 pps
- Dial break: 1 to 99%
- Inter-digit time: 1 to 999 ms

Digit generators

- One digit generator per line
- Dialing codes: MFR1, MFR2, DTMF
- Default level: -9 dBm
- Default frequencies: Nominal + 0.005%
- Programmability: Each line individually
- Programmable for level 0 dBm to -50 dBm in 1-dB steps for each frequency component
- Programmable frequency range: Up to 12.5 above or below nominal in 0.1% steps for each frequency component

Printout and reports - call statistics

Manual reports

- Call statistics for each line or channel
- Totals for all lines and channels

Automatic reports

- Prints automatically on the hour or every half or quarter hour
- Contents of each column in the printout are user selectable

Call statistics for each originate line or channel

- Call attempt count
- Call completion count
- Delayed start signal count
- No start signal count
- No alert signal count
- No voice path or B-channel confirmation count
- Busy signal encountered count
- No answer signal count
- Ring-time count (ISDN PRI)
- Average dial tone delay
- Average post dial delay
- Custom code report count (programmable in test script)

Call statistics for each terminate line or channel

- Attempted calls count
- Completed calls count
- Custom code report count (programmable in test script)

VoP statistics

Signal analysis tests

- Average and maximum dropout duration (ms)
- Dropouts categorized into 5 Bins
- Average and maximum front clip duration (ms)
- Front clips categorized into 5 Bins
- Average and maximum back clip duration (ms)
- Back clips categorized into 5 Bins
- Average and maximum jitter duration (ms)

Dropout tests

- Average and maximum dropout duration (ms)
- Dropouts categorized into 5 Bins
- No tone detected
- Tone lost

One-way delay tests

- Average, minimum, and maximum one-way delay (ms)
- One-way delay categorized into 5 Bins

Round trip delay tests

- Average, minimum, and maximum round trip delay (ms)
- Round trip delay categorized into 5 Bins

GoldenVoice tests

- Minimum and maximum total energy
- Minimum and maximum signal to noise ratio
- Minimum and maximum GoldenVoice energy
- Maximum spurious energy overflow
- Spurious energy overflow
- Low signal to noise ratio

GMOS tests

- Average and maximum percent (%) drop
- Drop packet size (ms)
- Drop test time (s)
- Average and maximum one-way delay (ms)
- Average and minimum circuit noise
- Minimum and maximum receive level
- Average and maximum round trip delay (ms)
- Terminating channel indicator
- Average and maximum SNR

MQoS tests

- Equivalent data rate Kbps
- Total Bit Errors
- Total Block Errors
- Round trip delay
- MQoS score
- FAX pages sent per hour

Echo Canceller tests

- Average energy level
- Max energy level
- Energy threshold exceeded

Voice Echo Response tests

- Average energy level per time bin

Digit generators - dialed digit strings are of unlimited length

Dial pulse generator

- Programmable dial speed: 1 pps to 999 pps
- Dial break: 1 to 99%
- Inter-digit time: 1 to 999 ms

Digit generators:

- One digit generator per line
- Dialing codes: MF R1, MF R2, DTMF
- Default level: -9 dBm
- Default frequencies: Nominal $\pm 0.005\%$
- Programmability: Each line individually
- Programmable for level 0 dBm to -50 dBm in 1 dB steps for each frequency component
- Programmable frequency range: Up to 12.5% above or below nominal in 0.1% steps for each frequency component

Ordering information

Mainframe/Chassis/Test Set

ALG-A	Allegro 4-line Analog POTS Call Generator
ALG-D	Allegro 2-span Digital T1/E1 Call Generator
ALG-IP	Allegro 8-IP session ETH 10/100Call Generator

Options

240092	Allegro Digital Licence Key, adds 2 T1/E1 spans
250532	Allegro Command Set Feature
250533	Allegro G.729 Software
250534	Allegro Analog GPS Option
250538	Allegro Extended Feature Set

Accessories

190005	Allegro Protocol Development Kit
240091	XpresScript Visual Scripting Tool for Allegro

Cables

480182	RJ45 to RJ45 cable, 5 ft.
480163	RJ45 Modular to open end, 10' ea.
480164	RJ45 Modular to Minigator, 10' ea.
480165	RJ45 Modular to Sleeve, 10' ea. A

Please ask for further information on:

- ▶ VoIP test applications including GMOS, PESQ, etc.
- ▶ Overview of supported protocol variants

All statements, technical information and recommendations related to the products herein are based upon information believed to be reliable or accurate. However, the accuracy or completeness is not guaranteed, and no responsibility is assumed for any inaccuracies. The user assumes all risks and liability whatsoever in connection with the use of a product or its applications. Ameritec reserves the right to change at any time without notice the design, specifications, function, fit or form of its products described herein, including withdrawal at any time of a product offered for sale. Please contact Ameritec for more information. Ameritec and the Ameritec logo are trademarks of Ameritec. Other trademarks are the property of their respective holders. © 2005 Ameritec. All rights reserved.

NORTH AMERICA
TEL: 1 866 228 3762
FAX: +1 301 353 9216

WEBSITE: www.ameritec.com